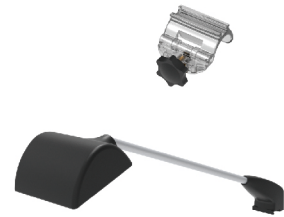
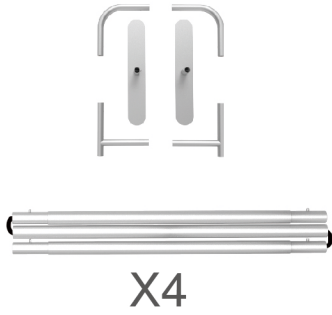


### PARTS

(1) Hardware

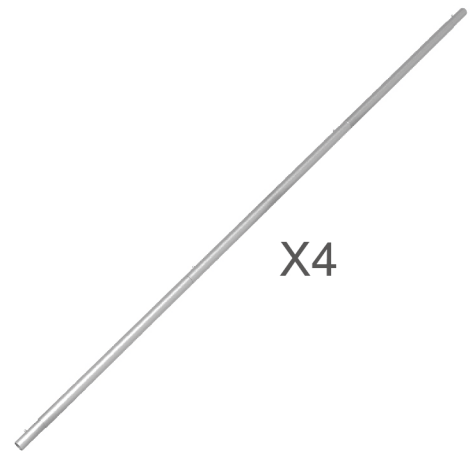
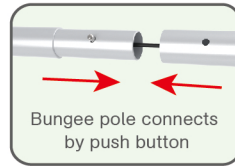
(2) Graphic printing fabric banner

(3) LED Light  
Light Clips



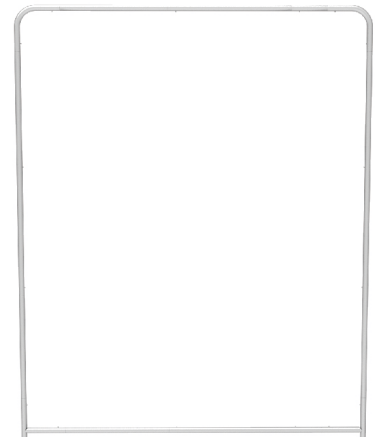
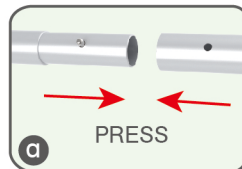
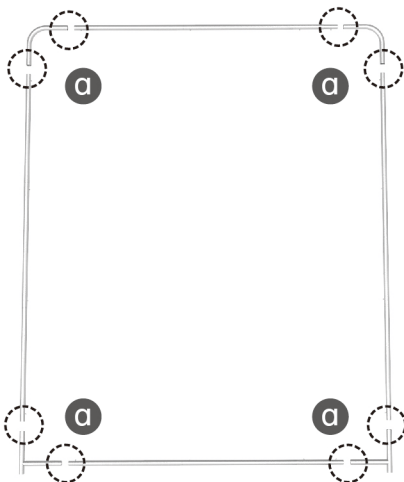
#### STEP 01

To connect the poles according to the labellings



#### STEP 02

Connect the support poles.



### PARTS

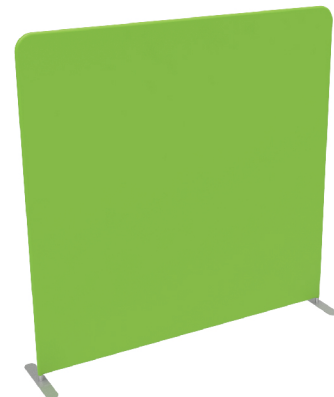
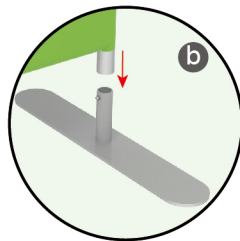
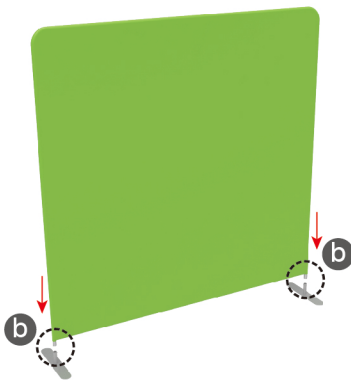
#### STEP 03

To slide the fabric banner on the frame from top and zip up at bottom



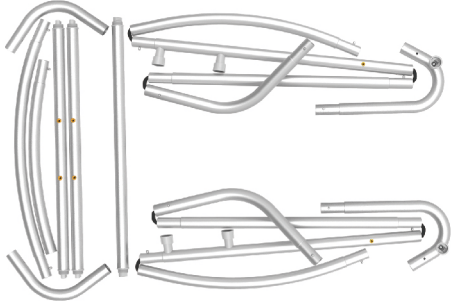
#### STEP 04

To assemble the stand feet in position



## PARTS

(1) Hardware



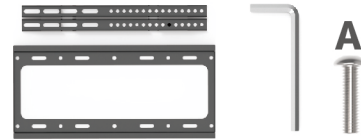
(2) Graphic printing fabric banner



(3) Shelves and Bracket x 2

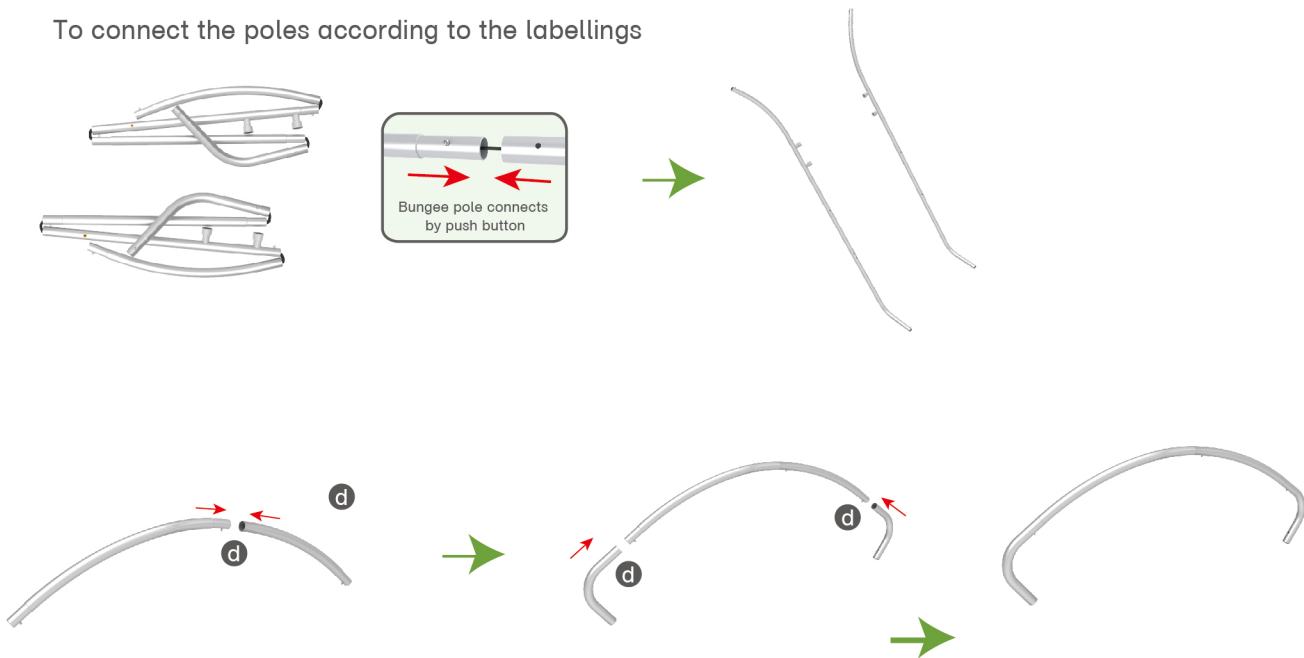


(4) 1x TV rack and screw bag

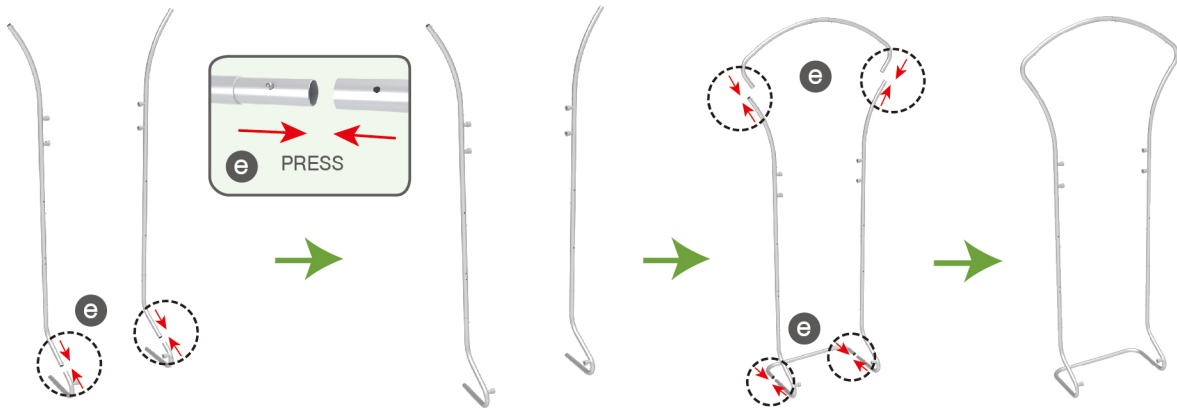


### STEP 01

To connect the poles according to the labellings

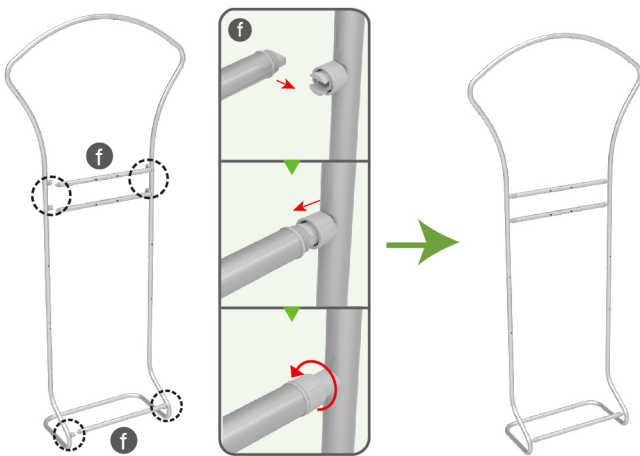


### PARTS



### STEP 02

To install the cross bar in position



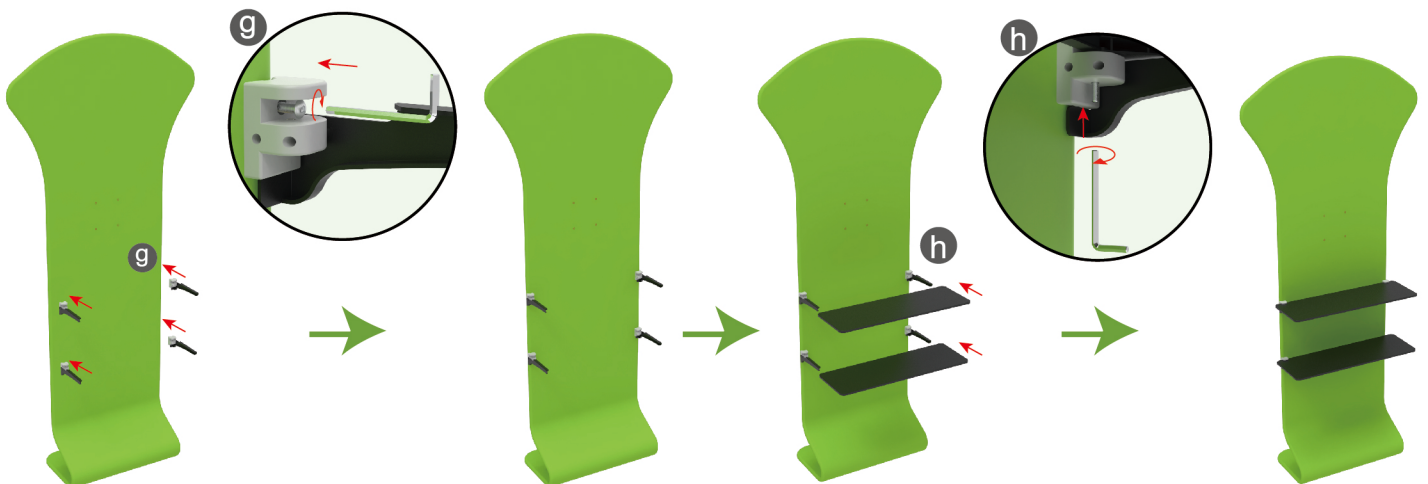
### STEP 03

To slide over the fabric banner from top to bottom and zip up



### STEP 04

To install the shelves by using the bracket, afterwards to install the TV mount in position



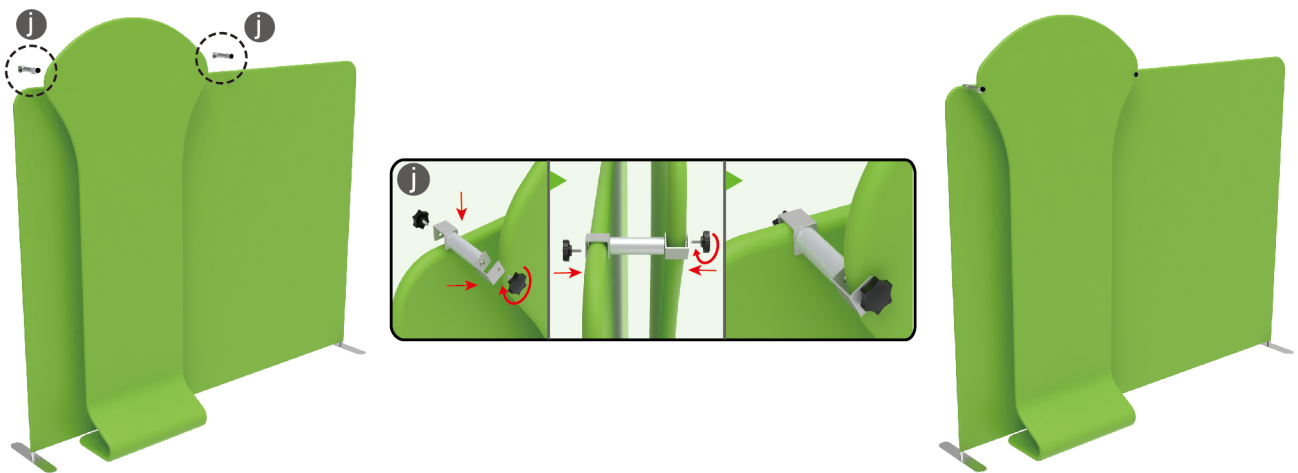
## PARTS

### Booth Set Assembly



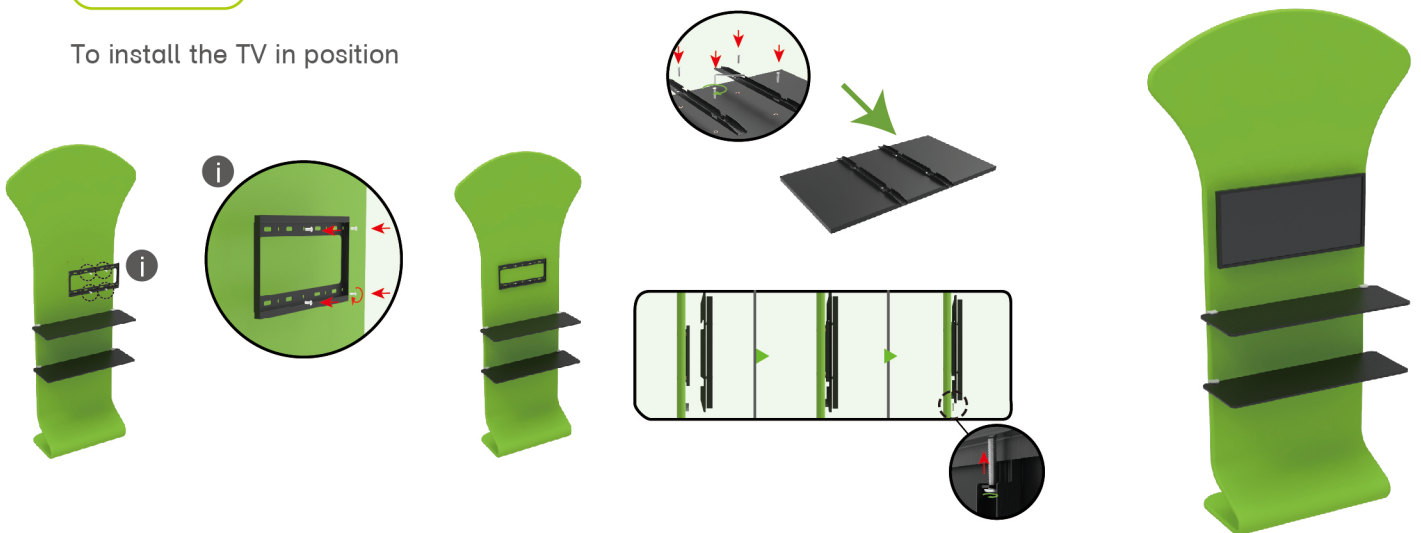
#### STEP 01

To install the TV stand to the backwall by using brackets



#### STEP 02

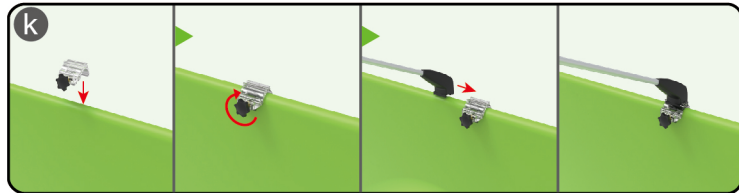
To install the TV in position



## PARTS

### STEP 03

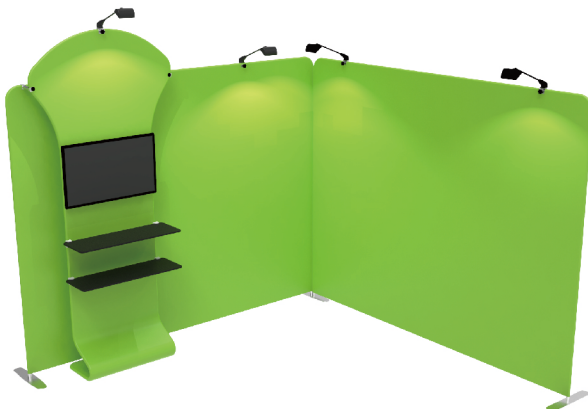
Install LED light



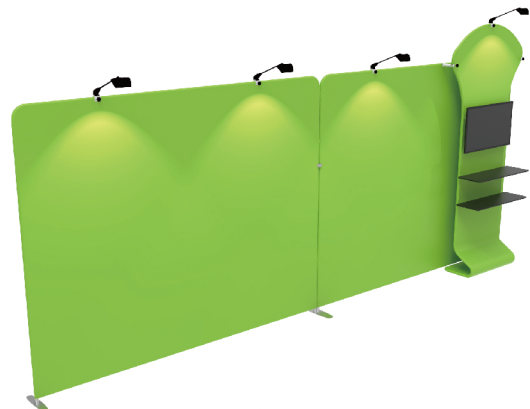
Same Assembly Steps for below Booths



10X10ft-Booth-I



10X10ft-Booth-Z



10X10ft-Booth-N